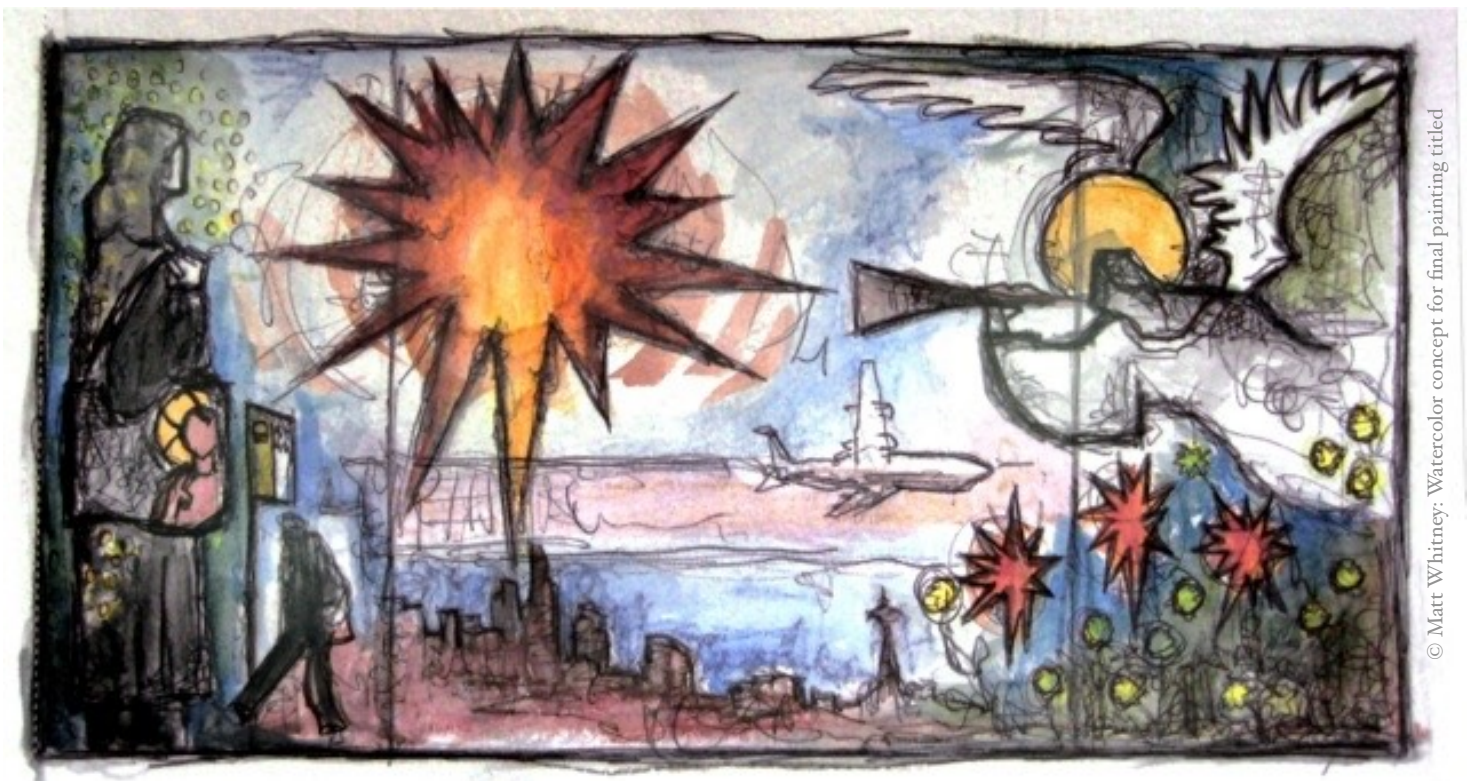


Advent 2018



© Matt Whitney: Watercolor concept for final painting titled

IN THIS ISSUE

Innovation Hub p.2 | Christmas Store & December Events p.3
Church Updates p.4 | November Calendar p.5

Redeemer Partners with Augsburg Riverside Innovation Hub

The following article excerpts appeared at <https://catholicresearch.smp.org> about how Redeemer's Innovation Team — Paul and Amy Koopman, Patrick Connelly, Trai Dunlap, Lonna Field, and Jordan Brandt, under the coaching of Michelé Crowder — are examining and reimagining Beloved Community in an increasingly post-Sunday culture. We were grateful to be profiled by Jerry Ruff about our participation in this exciting project!

Congregations participating in the Riverside Innovation Hub (RIH) practice four “artforms” as a means to discerning how they might best “innovate new connections with young adults at the intersections of their faith and their public lives.” (RIH) Those artforms are accompaniment, interpretation, discernment, and proclamation.

Essentially, the four artforms require that congregation talk with, listen to, and observe, both within the church community and the surrounding neighborhood; interpret what they hear and see; discern how to respond, given this new familiarity and understanding; and finally participate within the neighborhood as more fully prepared RIH partners to proclaim the good news in word and deed.

An earlier blog described the genesis and current status of RIH. In this week's blog, we visit with two young adult RIH coaches and three congregational leaders at two participating churches: Michelé Crowder (RIH Innovation Coach), Amy Koopman (Office Administrator and Communications) and Paul Koopman (Worship, Arts, and Music Minister), at Redeemer Lutheran Church in north Minneapolis; and Amanda Vetsch (RIH Innovation Coach) and Nicholas Tangen (Minister of Faith in Community), at University Lutheran Church of Hope in southeast Minneapolis

Why Participate in RIH?

Amy: We were actually invited by the RIH designers to apply. Some of this we had already intuitively been doing, and [RIH] invited us to apply for the program so that we could learn from each other, go deeper systematically and lay out a framework to define things we'd been doing without definition.

Paul: We want to document what we are doing, not just do it intuitively, so the legacy can continue when leadership turns over. It has been challenging, getting us to think about how the process is going, what we are intentionally doing at every step.

Amy: RIH is a microcosm of everything we are doing right now, listening to young people and letting them tell, guide, and direct us where the church is going and can be meaningful for them, even though it's not a traditional Sunday church form. What's important, meaningful, resonates [with young adults], we are empowering them or giving them resources to help them build that. We do a lot of outreach, in-reach, and so many different ministries within the Redeemer community, all of which revolve around listening deeply to the community we're trying to serve. RIH is a very explicit picture of that, but what we're doing with young adult ministry through RIH isn't the only or most important ministry at Redeemer.

What Have You Learned So Far?

Amy: Young adults are wildly informed and engaged in their communities. They've thrown themselves into the work they are doing in the communities they are in. Some are struggling with the transition from college into the real world, but even as they struggle with the outside world they are each other's anchor. It's incredible to watch and inspiring. It all revolves around how to be community.

Michelé: I've found that we are eager to jump ahead to proclamation, but deeper listening must take place. An individual and group commitment to accompany others by first listening to them [is necessary].

For the remainder of this artform with both of my teams [each RIH Innovation Coach works with two congregations], we will go out to listen by asking a few questions—Where do you find peace or space to be beyond the church walls? What about this community brings you hope and what brings you anxiety? This work helps build the capacity to listen, to step outside of one's comfort zone, and to see the good news that is dwelling beyond the church walls.

Annual Christmas Store

JOIN US on Saturday, December 8th from 9am to 11:30am as we host our annual Redeemer Christmas Store!

Saturday morning, December 8th, Redeemer will once again host our annual Christmas Store from 9am-11:30am. We're teaming up with partner congregations to fill our store with amazing gifts, guide children through our Christmas Store with "elves" who'll help them choose their four gifts for \$1 (25 cents each!) for family members, get them wrapped, decorate cookies, and enjoy lunch.

As always, we need lots of volunteers and would love your help! You can [sign up to volunteer online](#), on the form on the back table in the sanctuary before and after worship, or contact Pastor Babette (bchatman@redeermpls.org) or Mary Simonson Clark (development@redeemercenter.org) for more information!



redeemer

12.08.18 | 9AM -11:30AM | REDEEMER LUTHERAN CHURCH
1800 GLENWOOD AVE, MINNEAPOLIS MN 55405

FOUR GIFTS FOR ONE DOLLAR + GIFT WRAPPING + COOKIE DECORATING + LUNCH

CHRISTMAS STORE 2018



A December to Remember!

The Word

"Compassionate Love"

- FREE MEAL
- LIVE MUSIC
- OPEN MIC
- COMMUNITY TOGETHERNESS
- FAMILY FRIENDLY

Saturday, December 8th, 4 - 6 PM
Salem Lutheran Church
On the corner of 42nd & Dupont
In North Minneapolis

ALL ARE WELCOME



Join us after worship on December 16th for a **Redeemer Family Meal** in the fellowship hall!



On Sunday, December 16th, the Children of Redeemer will preside over worship to present their yearly **Christmas Pageant**, telling the story of Jesus' birth through song and dramatic storytelling ... in costume! You don't want to miss this special event!

Redeemer is teaming up with Salem Lutheran Church to host **The Word: Compassionate Love** on December 8th from 4 to 6pm.

Bring the whole family for a community meal, live music, open mic, and fellowship around the Advent of Christ!

4150 Dupont Ave N, Mpls 55412

church updates

Financial Update - December 2018

"For as the body apart from the spirit is dead, so also faith apart from works is dead." James 2:23 ESV

I know many of you took action this month to stand up for our future, for our faith, and for truth by canvassing, making phone calls, driving, and ultimately by turning out at the polls. We can tell by the results. There are events in our lives and in the world that are always calling us to take faithful action.

As the holiday season approaches, let the celebration of our faith and of God's gift to humanity also call us to act. Let this season of giving stir in us a spirit of generosity to our neighbors so that the faith we so abundantly celebrate can be put into action here in the kingdom of God. We will know by the results!

Contacts: 612.231.8323 or email: mtarras@gmail.com

GIVING UPDATE	actual:	budgeted:
revenue	\$304,885.94	\$316,218.66
expenses	\$404,710.56	\$411,215.32
monthly tithes	\$16,430.53	\$15,300.00
monthly partner giving	\$2,851.53	\$2250.00

executive council members //

president: Sarah Stadie
secretary: Rachel Birkedal
treasurer: Mike Terras

council members //

Helen Collins (education), Geoff Meyer (evangelism + outreach), Siri Fiebiger (service + advocacy), Steve Patnode (fellowship), Stuart Munk (property), Linnae Nelson-Seys (stewardship), Paul Koopman (worship, arts, + music), Cora Iverson (youth)

church staff

senior pastor Kelly Chatman
associate pastor Babette Chatman
office administrator & communications Amy Koopman
accountant Beatrice Kanake
music ministry Kent Goodroad
Alyssa Schwitzer
Traiveon Dunlap
Emander Deward
sunday school coordinator Helen Collins
youth director Traiveon Dunlap
maintenance director Tyrone Wade

every week at redeemer

sun	prayer+praise 10am / sanctuary	worship+liturgy 10:30am / sanctuary	
mon	health commons & zumba 6-7pm living room	RAP / 4-6:30pm rlc fellowship hall	narcotics anonymous 6pm / fellowship hall
tue	busy fingers crafting fellowship 9am-12pm sewing room	RAP / 4-6:30pm rlc fellowship hall	health commons & yoga 3-7pm @ the living room
wed	\$1 coffee @ venture north 11am-7pm	RAP / 4-6:30pm rlc fellowship hall	
thu		RAP / 4-6:30pm rlc fellowship hall	health commons zumba / 6-7pm @ the living room
fri	church office closes / 12pm		narcotics anonymous 6pm / fellowship hall
sat	men's group 10am-12pm / upstairs		

redeemer

LUTHERAN CHURCH

1800 glenwood ave | minneapolis mn 55405

| www.redeemermpls.org

Return Service Requested

Non-Profit Org
US Postage
PAID
Twin Cities, MN
PERMIT #3170

Mailing Address



in this issue //

Pastoral Letter | Riverside Innovation Hub | Christmas
Store & December Events |
Church Updates |
December 2018 Calendar

JOIN US SUNDAYS:
Prayers & Praise 10am
Worship: 10:30am

CHURCH OFFICE HOURS:
Monday-Thursday: 9am-4pm
Friday: 9am-12pm